

# **CAPITAL BUDGET**

**FISCAL YEAR 2017-18**

**Adopted  
June 12, 2017**



Irvine Ranch Water District  
15600 Sand Canyon Avenue  
Irvine, CA 92618

# **FISCAL YEAR 2017-18 CAPITAL BUDGET**

## **TABLE OF CONTENTS**

<u>TAB</u>	<u>DESCRIPTION</u>
1.	Project Expenditures by Project Number with Improvement District Allocations
2.	Flagged Projects
3.	“Top 10” Project Groups (extended to include all project groups in FY 2017-18)
4.	Water Improvement District Map
5.	Sewer Improvement District Map

Irvine Ranch Water District  
 Fiscal Year 2017-18 Capital Budget  
 Section 1 - Projected Expenditures by Project

							Improvement Districts																			
System	Project	Project Title	Start	End	FY17-18 Direct	Total Direct	1100	1110	1120	1130	1250	1530	1540	1850	1880	2100	2220	2120	2130	2250	2400	2530	256	2850	2880	
Recycled	01015	TECHNOLOGY DR AND LAGUNA CANYON RD RW Z	11/1/14	6/30/18	\$1,110,955	\$3,223,500												21.0				79.0				
Potable	01100	LAKE FOREST WELL 1 DRILLING	3/1/18	12/31/19	\$22,307	\$1,417,600		32.6	3.3	3.0	47.5	11.1	0.4	1.6	0.5											
Potable	01117	LAKE FOREST WELL 1 WELLHEAD	4/1/18	12/31/19	\$13,732	\$1,035,100		32.6	3.3	3.0	47.5	11.1	0.4	1.6	0.5											
Recycled	01257	HQ OFFICE IMPROVEMENTS-RW	7/1/11	12/31/19	\$22,925	\$81,400										100.0										
Potable	01264	ASSET OPTIMIZATION-LAKE FOREST DEVELOPMEN	7/1/07	12/31/17	\$127,848	\$7,345,000	100.0																			
Potable	01336	HQ OFFICE IMPROVEMENTS-DW	7/1/11	12/31/19	\$91,005	\$277,300	100.0																			
Potable	01383	OCWD ANNEXATION FEE 17/18	8/1/17	4/30/18	\$589,300	\$589,300		32.6	3.3	3.0	47.5	11.1	0.4	1.6	0.5											
Potable	01402	WELLS 51/52/53 TREATMENT ALTERNATIVES STUD	6/1/18	12/31/19	\$3,830	\$133,100		32.6	3.3	3.0	47.5	11.1	0.4	1.6	0.5											
Potable	01414	SAND CANYON 16 INCH DW PIPELINE ANODE REPL	12/1/17	12/31/19	\$24,251	\$243,100	100.0																			
Sewer	01429	OCSD SOLIDS HANDLING 16/17	7/1/16	7/31/17	\$108,527	\$4,191,000										45.5	18.9	1.5	1.5	27.7		4.1	0.1	0.6	0.1	
Sewer	01530	OCSD EQUITY 16/17	8/1/16	9/30/17	\$1,321,444	\$11,893,000											33.1	3.4	3.4	48.5		9.7	0.3	1.3	0.3	
Sewer	01542	OCSD EQUITY 17/18	7/1/17	12/31/18	\$1,200,000	\$39,620,000											33.1	3.4	3.4	48.5		9.7	0.3	1.3	0.3	
Sewer	01549	HQ OFFICE IMPROVEMENTS-SS	7/1/11	12/31/19	\$78,806	\$245,900										100.0										
Sewer	01568	OCSD CORF 17/18	7/1/17	9/30/18	\$5,759,000	\$5,814,000										72.7	9.0	0.9	0.9	13.3		2.6	0.1	0.4	0.1	
Recycled	01722	PA1 NHB4 ORCHARD HILLS RW	2/1/17	3/31/18	\$528,709	\$566,500																			100.0	
Recycled	01762	PA9B PHASE 5 GATEWAY PARK RW PIPES	12/1/16	6/30/19	\$104,752	\$506,100																				100.0
Recycled	01813	SANTIAGO DAM OUTLET TOWER REPLACEMENT	7/1/13	12/31/17	\$184,300	\$568,700											14.6	10.7	4.1	51.0	7.7	10.4		1.5		
Potable	03566	ENTERPRISE ASSET MGMT SOFTWARE IMPLEMENT	10/1/11	12/31/17	\$277,781	\$2,682,100		32.6	3.3	3.0	47.5	11.1	0.4	1.6	0.5											
Sewer	03567	ENTERPRISE ASSET MGMT SOFTWARE IMPLEMENT	10/1/11	12/31/17	\$277,781	\$2,682,100											33.1	3.4	3.4	48.5		9.7	0.3	1.3	0.3	
Recycled	03734	PA40 TRAVELAND FACILITIES-RW	12/1/16	6/30/19	\$69,396	\$447,700												21.0							79.0	
Recycled	03735	PA39 PH2 FACILITIES-RW	6/1/16	10/31/18	\$174,315	\$226,600																				100.0
Sewer	03750	SOCWA ETM PROTECTION-TRAIL BRIDGE CROSSIN	8/1/16	12/31/20	\$2,609	\$951,500										100.0										
Potable	03766	STOCKDALE WEST INTEGRATED WATER BANKING P	3/1/12	12/31/17	\$571,731	\$12,340,600		32.6	3.3	3.0	47.5	11.1	0.4	1.6	0.5											
Recycled	03780	SAN JOAQUIN RESERVOIR LINER REPLACEMENT	5/1/18	12/31/20	\$38,463	\$2,807,900										100.0										
Recycled	03808	SYPHON RESERVOIR EXPANSION	6/1/15	12/31/21	\$417,364	\$60,169,200											14.6	10.7	4.1	51.0	7.7	10.4		1.5		
Recycled	04147	PA51 MARINE WAY ZNB-RW	11/1/12	12/31/17	\$13,471	\$1,201,200												87.4							12.6	
Potable	04153	PA51 MARINE WAY ZN3 DW	11/1/12	12/31/17	\$6,086	\$420,200			20.9			79.1														
Sewer	04267	PA51 RIDGE VALLEY-MARINE WAY TO TRABUCO SS	1/1/13	12/31/17	\$20,481	\$1,493,800												22.9							77.1	
Potable	04268	PA51 RIDGE VALLEY-MARINE WAY TO TRABUCO D	1/1/13	12/31/17	\$6,920	\$486,200			20.9			79.1														
Recycled	04278	PA51 RIDGE VALLEY-MARINE WAY TO TRABUCO R	1/1/13	12/31/17	\$6,720	\$464,200												87.4							12.6	
Sewer	04286	MWRP BIOSOLIDS AND ENERGY RECOVERY FACILIT	4/1/13	12/31/18	\$15,412,800	\$216,073,100										45.5	18.9	1.5	1.5	27.7		4.1	0.1	0.6	0.1	

Improvement Districts

System	Project	Project Title	Start	End	FY17-18 Direct	Total Direct	1100	1110	1120	1130	1250	1530	1540	1850	1880	2100	2220	2120	2130	2250	2400	2530	256	2850	2880	
Recycled	04400	MULTI-ZONE BPS-ZONE A-C	3/1/16	6/30/19	\$2,070,121	\$7,520,000												56.0				44.0				
Recycled	04457	MULTI-ZONE BPS-ZONE A-B	3/1/16	6/30/19	\$1,639,864	\$5,950,000										13.7		48.2				38.1				
Sewer	04467	MWRP REPAIRS: ACT SLUDGE-2DARY TANKS-RAS/	10/1/16	6/30/19	\$50,909	\$3,181,600										100.0										
Potable	04512	PA5B PHASE 1A 12 ZONE 3 DW	5/1/13	12/31/17	\$2,571	\$132,000						100.0														
Recycled	04513	PA5B PHASE 1A AND 1B 6 -8 RW	5/1/13	12/31/17	\$5,047	\$298,200																		100.0		
Recycled	04514	PA5B PHASE 1A AND 1B 36 RW	5/1/13	12/31/17	\$16,008	\$1,769,400											14.6	10.7	4.1	51.0	7.7	10.4		1.5		
Recycled	04557	PA6 PHASE 1 NEIGHBORHOOD 3 ZONE C RW	6/1/13	12/31/17	\$5,312	\$315,700																			100.0	
Sewer	04614	PA51 REACH A SEWER IMPROVEMENTS	6/1/13	12/31/17	\$33,655	\$3,956,500												67.0				33.0				
Potable	04645	PA51 C ST FROM LQ ST TO O ST DW	7/1/13	12/31/17	\$3,856	\$211,700				67.3			32.7													
Recycled	04646	PA51 C ST FROM LQ ST TO O ST RW	7/1/13	12/31/17	\$4,911	\$266,200																				99.6
Recycled	04647	PA51 LY ST FROM TRABUCO RD TO LQ ST RW	7/1/13	12/31/17	\$4,856	\$205,700																				99.6
Sewer	04648	PA51 LQ ST FROM O ST TO LY ST SS	7/1/13	12/31/17	\$4,244	\$255,200																				61.5
Recycled	04649	PA51 LQ ST FROM O ST TO LY ST RW	7/1/13	12/31/17	\$1,567	\$78,100																				93.5
Potable	04650	PA51 LY ST FROM LQ ST TO IRVINE BLVD DW	7/1/13	12/31/17	\$1,633	\$51,700				98.2			1.8													
Sewer	04651	PA51 LY ST FROM LQ ST TO IRVINE BLVD SS	7/1/13	12/31/17	\$17,689	\$1,262,200																				100.0
Recycled	04652	PA51 LY ST FROM LQ ST TO IRVINE BLVD RW	7/1/13	12/31/17	\$19,478	\$938,300																				99.6
Sewer	04653	PA51 C ST FROM TRABUCO RD TO LQ ST SS	7/1/13	12/31/17	\$7,967	\$403,700																				100.0
Potable	04680	PA18S HIDDEN CANYON 12 DW	7/1/13	12/31/17	\$5,967	\$315,700						100.0														
Recycled	04681	PA18S HIDDEN CANYON 6 -8 RW	7/1/13	12/31/17	\$5,967	\$315,700																				100.0
Recycled	04753	PA5B PHASE 2 6 RW	7/1/13	12/31/17	\$911	\$57,200																				100.0
Recycled	04984	TUSTIN LEGACY ARMSTRONG ZONE A-WARNER ZO	11/1/13	12/31/17	\$15,996	\$773,300																				100.0
Potable	04988	TUSTIN LEGACY WARNER FROM ARMSTRONG TO L	11/1/13	12/31/17	\$1,380	\$150,500				100.0																
Recycled	04989	TUSTIN LEGACY WARNER FROM ARMSTRONG TO L	11/1/13	12/31/17	\$6,084	\$332,700																				100.0
Sewer	05016	PA51 C ST FROM LV ST TO TRABUCO SS	11/1/13	12/31/17	\$8,844	\$370,700																				100.0
Potable	05027	BAKER WATER TREATMENT PLANT	1/1/14	7/31/17	\$224,186	\$100,852,000				32.6	3.3	3.0	47.5	11.1	0.4	1.6	0.5									
Recycled	05154	SJR SEISMIC EVALUATION (DSOD)	6/1/18	6/30/20	\$1,400	\$150,700												14.6	10.7	4.1	51.0	7.7	10.4		1.5	
Recycled	05156	LAGUNA CANYON RD RW PIPELINE CORROSION RE	1/1/18	7/31/19	\$65,000	\$588,500												100.0								
Recycled	05168	PA18S HIDDEN CANYON 36 RW PIPELINE	3/1/13	12/31/17	\$19,159	\$2,208,200												14.6	10.7	4.1	51.0	7.7	10.4		1.5	
Sewer	05174	MAIN ST DIVERSION STRUCTURE GROUND SETTLIN	8/1/15	8/31/17	\$5,809	\$617,700												100.0								
Recycled	05243	PA6 NHB4B 6 RW ZONE D	2/1/14	12/31/17	\$12,881	\$526,900																				100.0
Potable	05404	LAKE FOREST Z2-2RA PRV AT COMMERCENTRE	6/1/17	12/31/19	\$3,158	\$412,700								100.0												
Potable	05406	EL MODENA INLET MODIFICATION	6/1/18	6/30/19	\$1,818	\$156,200				32.6	3.3	3.0	47.5	11.1	0.4	1.6	0.5									
Recycled	05407	ILP NORTH CONVERSION-RESERVOIR	3/1/14	12/31/19	\$7,715,192	\$14,382,500											0.3		40.1	0.1	16.8	0.3	42.3		0.1	
Potable	05410	COASTAL ZONE 2 PRV MODIFICATION (DPR16)	12/1/17	6/30/19	\$41,200	\$187,100						100.0														
Sewer	05427	WATER RECYCLING TRT PLANT MSTR PLAN UPDATE	4/1/16	1/31/19	\$325,165	\$921,300												33.1	3.4	3.4	48.5		9.7	0.3	1.3	0.3

System	Project	Project Title	Start	End	FY17-18 Direct	Total Direct	Improvement Districts																				
							1100	1110	1120	1130	1250	1530	1540	1850	1880	2100	2220	2120	2130	2250	2400	2530	256	2850	2880		
Sewer	05470	NEWPORT COAST SLS AND FM RECOATING	6/1/15	7/31/18	\$1,041,296	\$1,432,200											100.0										
Potable	05473	WELLS 11 AND 15 SURGE TANK REPLACEMENT	11/1/14	6/30/18	\$2,884,248	\$3,626,200	100.0																				
Recycled	05476	RATTLESNAKE ZONE A BPS REBUILD	5/1/17	10/31/20	\$1,932	\$3,937,700											100.0										
Potable	05499	STOCKDALE STORAGE FOR RECOVERY CAPACITY	7/1/15	4/30/18	\$1,500,000	\$1,590,800		32.6	3.3	3.0	47.5	11.1	0.4	1.6	0.5												
Sewer	05520	MAINTENANCE ACCESS FOR FOUR SEWER REACHE	7/1/17	7/31/19	\$41,200	\$368,000											100.0										
Sewer	05535	PA51 LQ ST FROM BOSQUE TO Z ST 12 -SS	5/1/14	12/31/17	\$61,147	\$1,510,300														100.0							
Recycled	05536	PA51 LQ ST FROM BOSQUE TO Z ST 12 RW	5/1/14	12/31/17	\$9,259	\$416,900													99.6					0.4			
Potable	05756	PA51 B ST FROM SOCIABLE TO IRVINE BLV 12 ZN 4	8/1/14	12/31/17	\$6,746	\$243,100				98.2			1.8														
Recycled	05757	PA51 B ST FROM SOCIABLE TO IRVINE BLV 16 ZN C	8/1/14	12/31/17	\$5,400	\$240,900													99.6					0.4			
Recycled	05758	PA51 CADENCE-PUSAN TO CHINON 12_16RW	8/1/14	12/31/17	\$5,810	\$271,700													87.4					12.6			
Potable	05761	EAST IRVINE ZONE 1 RESERVOIR INTERIOR RECOATI	6/1/18	9/30/19	\$2,286	\$2,748,500	100.0																				
Recycled	05763	PA6 NHB5A RW ZONE D	8/1/14	12/31/17	\$3,073	\$132,000																		100.0			
Sewer	05788	PA51 ALTON PKWY SS RELOCATION 12 AND 18	8/1/14	12/31/17	\$39,117	\$1,832,300														100.0							
Potable	05816	PA51 ALTON-TECHNOLOGY TO MUIRLANDS 12 DW	9/1/14	12/31/17	\$4,515	\$177,100				20.9			79.1														
Sewer	05817	PA51 ALTON-TECHNOLOGY TO MUIRLANDS SS REL	9/1/14	12/31/17	\$16,995	\$1,326,300														100.0							
Recycled	05818	PA51 ALTON-TECHNOLOGY TO MUIRLANDS 16 RW	9/1/14	12/31/17	\$8,295	\$344,300														87.4				12.6			
Recycled	05823	ILP NORTH CONVERSION-PIPELINES	3/1/14	12/31/18	\$8,470,477	\$10,991,100											2.1		2.5	1.0	46.3	1.8	46.0		0.3		
Recycled	05919	PA1 NHB1 ORCHARD HILLS 16 ZC 6 ZC+	10/1/14	12/31/17	\$27,222	\$521,400																		100.0			
Sewer	06010	TUSTIN LEGACY PARK AVE FROM JAMBOREE TO VI	12/1/14	12/31/17	\$1,767	\$64,900															100.0						
Potable	06016	PA51 IRVINE BLVD-LAMBERT TO Z ST 12 DW	12/1/14	12/31/17	\$16,057	\$256,200				98.2			1.8														
Sewer	06017	PA51 IRVINE BLVD-LAMBERT TO Z ST 16 SS	12/1/14	12/31/17	\$6,734	\$115,500														100.0							
Recycled	06018	PA51 IRVINE BLVD-LAMBERT TO Z ST 20 RW	12/1/14	12/31/17	\$80,674	\$1,412,400														99.6				0.4			
Potable	06023	ROSEDALE DROUGHT RELIEF PROJECT FACILITIES	1/1/15	6/30/18	\$374,912	\$9,872,500		32.6	3.3	3.0	47.5	11.1	0.4	1.6	0.5												
Sewer	06048	PA51 MARINE WAY-ALTON TO BARRANCA 18 SS	1/1/15	12/31/17	\$38,250	\$1,424,500														100.0							
Potable	06080	CAPITAL PLANNING SUPPORT 17/18 DW	7/1/17	6/30/18	\$300,000	\$300,000		32.6	3.3	3.0	47.5	11.1	0.4	1.6	0.5												
Recycled	06081	CAPITAL PLANNING SUPPORT 17/18 RW	7/1/17	6/30/18	\$250,000	\$250,000													14.6	10.7	4.1	51.0	7.7	10.4		1.5	
Sewer	06082	CAPITAL PLANNING SUPPORT 17/18 SS	7/1/17	6/30/18	\$250,000	\$250,000													33.1	3.4	3.4	48.5		9.7	0.3	1.3	0.3
Potable	06086	PA51 MARINE WAY FROM ALTON TO BARRANCA 1	1/1/15	12/31/17	\$11,117	\$238,700				20.9			79.1														
Recycled	06087	PA51 MARINE WAY-ALTON TO BARRANCA 16 RW Z	1/1/15	12/31/17	\$7,600	\$281,600														87.4				12.6			
Sewer	06098	LAWRP SYSTEM REPLACEMENTS 17/18	7/1/17	6/30/18	\$138,600	\$138,600														100.0							
Potable	06109	TUSTIN LEGACY PARK AVE-MOFFETT DR 12 DW	2/1/15	12/31/17	\$16,523	\$579,700				100.0																	
Sewer	06110	TUSTIN LEGACY PARK AVE-MOFFETT DR 16 AND 15	2/1/15	12/31/17	\$53,024	\$387,200																		100.0			
Recycled	06111	TUSTIN LEGACY PARK AVE-MOFFETT DR 16 AND 6	2/1/15	12/31/17	\$16,265	\$568,700																		100.0			
Potable	06121	VAULT LID REPLACEMENT-DW	6/1/18	7/31/19	\$14,786	\$397,700	100.0																				
Sewer	06122	VAULT LID REPLACEMENT-SS	6/1/18	7/31/19	\$5,029	\$96,300														100.0							

System	Project	Project Title	Start	End	FY17-18 Direct	Total Direct	Improvement Districts																				
							1100	1110	1120	1130	1250	1530	1540	1850	1880	2100	2220	2120	2130	2250	2400	2530	256	2850	2880		
Recycled	06123	VAULT LID REPLACEMENT-RW	6/1/18	7/31/19	\$9,671	\$195,300											100.0										
Potable	06159	CANADA ROAD JOINT BONDING	6/1/18	7/31/19	\$6,123	\$233,200	100.0																				
Potable	06160	CENTRALIZED CONTROL ROOM AT MWRP-DW	6/1/18	12/31/19	\$7,500	\$170,000		32.6	3.3	3.0	47.5	11.1	0.4	1.6	0.5												
Sewer	06161	CENTRALIZED CONTROL ROOM AT MWRP-SS	6/1/18	12/31/19	\$7,500	\$170,000											33.1	3.4	3.4	48.5		9.7	0.3	1.3	0.3		
Potable	06162	CRYSTAL COVE RECTIFIER INSTALLATION-DW	6/1/18	6/30/19	\$3,809	\$138,800	100.0																				
Recycled	06163	CRYSTAL COVE RECTIFIER INSTALLATION-RW	6/1/18	11/30/19	\$5,437	\$133,300																					
Recycled	06164	CULVER ANODE BED AND RECTIFIER #5 REPLACEM	6/1/18	6/30/19	\$6,257	\$244,200																					
Potable	06165	DRWF SURGE TANKS	1/1/16	6/30/18	\$1,042,091	\$1,250,500		32.6	3.3	3.0	47.5	11.1	0.4	1.6	0.5												
Potable	06168	SAN JOAQUIN MARSH IMPROVEMENTS	9/1/15	8/31/17	\$12,471	\$2,032,900		32.6	3.3	3.0	47.5	11.1	0.4	1.6	0.5												
Potable	06169	ZN 8-9 PIPELINE ANODE BED LEAD WIRE REPLACE	6/1/18	6/30/19	\$6,648	\$315,200	100.0																				
Potable	06170	WELL MAINTENANCE AND REHABILITATION 17/18	7/1/17	6/30/18	\$450,000	\$450,000	100.0																				
Sewer	06172	MECH-ELEC SYS REPLACEMENT 17/18-SS	7/1/17	6/30/18	\$550,000	\$550,000																					
Potable	06173	MECH-ELEC SYS REPLACEMENT 17/18-DW	7/1/17	6/30/18	\$950,000	\$950,000	100.0																				
Recycled	06174	MECH-ELEC SYS REPLACEMENT 17/18-RW	7/1/17	6/30/18	\$660,000	\$660,000																					
Sewer	06175	MWRP SYS REPLACEMENTS 17/18	7/1/17	6/30/18	\$450,000	\$450,000																					
Recycled	06198	IIC EAST ZONE B BPS UPGRADES	1/1/16	10/31/18	\$525,657	\$734,600													54.2		23.1		22.7				
Potable	06205	GIS SUPPORT APPLICATIONS 17/18-DW	7/1/17	6/30/18	\$100,000	\$100,000		32.6	3.3	3.0	47.5	11.1	0.4	1.6	0.5												
Recycled	06206	GIS SUPPORT APPLICATIONS 17/18-RW	7/1/17	6/30/18	\$100,000	\$100,000													14.6	10.7	4.1	51.0	7.7	10.4		1.5	
Sewer	06207	GIS SUPPORT APPLICATIONS 17/18-SS	7/1/17	6/30/18	\$100,000	\$100,000													33.1	3.4	3.4	48.5		9.7	0.3	1.3	0.3
Potable	06208	PA51 MARINE WAY: SR133 TO RIDGE VALLEY 12 ZO	3/1/15	12/31/17	\$8,633	\$82,500				20.9			79.1														
Recycled	06209	PA51 MARINE WAY: SR133 TO RIDGE VALLEY 6 ZO	3/1/15	7/31/17	\$641	\$53,900														87.4						12.6	
Potable	06210	ASSET OPTIMIZATION-SAND CANYON PROFESSION	2/1/16	7/31/19	\$4,209,076	\$17,624,300	100.0																				
Sewer	06211	GEN SYS MODS 17/18-SS	7/1/17	6/30/18	\$330,000	\$330,000																					
Potable	06212	NTS INFILTRATION STUDY	6/1/18	6/30/19	\$3,846	\$64,900		32.6	3.3	3.0	47.5	11.1	0.4	1.6	0.5												
Potable	06213	IDF SODIUM HYPOCHLORITE STORAGE AND FEED S	1/1/16	1/31/18	\$634,165	\$2,913,900		32.6	3.3	3.0	47.5	11.1	0.4	1.6	0.5												
Potable	06214	PDF SODIUM HYPOCHLORITE STORAGE AND FEED	4/1/17	8/31/20	\$200,495	\$2,976,900		32.6	3.3	3.0	47.5	11.1	0.4	1.6	0.5												
Recycled	06216	NORTHWOOD ZONE B BPS DEMOLITION	5/1/17	3/31/20	\$1,932	\$539,000														54.2		23.1		22.7			
Potable	06217	1 TO 2 METER REPLACEMENT 17/18-DW	7/1/17	6/30/18	\$348,400	\$348,400	100.0																				
Recycled	06218	1 TO 2 METER REPLACEMENT 17/18-RW	7/1/17	6/30/18	\$93,400	\$93,400																					
Potable	06219	CSR METER REPLACEMENT 17/18-DW	7/1/17	6/30/18	\$228,850	\$228,850	100.0																				
Recycled	06220	CSR METER REPLACEMENT 17/18-RW	7/1/17	6/30/18	\$65,200	\$65,200																					
Potable	06221	GEN SYS MODS 17/18-DW	7/1/17	6/30/18	\$190,300	\$190,300		32.6	3.3	3.0	47.5	11.1	0.4	1.6	0.5												
Recycled	06222	GEN SYS MODS 17/18-RW	7/1/17	6/30/18	\$102,300	\$102,300														14.6	10.7	4.1	51.0	7.7	10.4		1.5
Potable	06223	RESIDENTIAL METER REPLACEMENT 17/18-DW	7/1/17	6/30/18	\$476,600	\$476,600	100.0																				
Potable	06224	SERVICE LINE-VALVE-MAIN REPLACEMENT 17/18-D	7/1/17	6/30/18	\$1,864,500	\$1,864,500	100.0																				

							Improvement Districts																			
System	Project	Project Title	Start	End	FY17-18 Direct	Total Direct	1100	1110	1120	1130	1250	1530	1540	1850	1880	2100	2220	2120	2130	2250	2400	2530	256	2850	2880	
Recycled	06225	SERVICE LINE-VALVE-MAIN REPLACEMENT 17/18-R	7/1/17	6/30/18	\$396,000	\$396,000										100.0										
Sewer	06226	SEWER LATERAL-MAIN REPLACEMENT 17/18	7/1/17	6/30/18	\$288,200	\$288,200										100.0										
Recycled	06244	RW CONVERSION IMPROVEMENTS FOR OFF-SITE 1	7/1/17	6/30/18	\$775,500	\$775,500										100.0										
Potable	06245	WATER SUPPLY RELIABILITY AGREEMENTS 16/18	7/1/16	6/30/18	\$152,855	\$440,000	32.6	3.3	3.0	47.5	11.1	0.4	1.6	0.5												
Potable	06248	WATER RELIABILITY PLANNING 17/18	7/1/17	6/30/18	\$137,500	\$137,500	32.6	3.3	3.0	47.5	11.1	0.4	1.6	0.5												
Potable	06304	PA51 BENCHMARK-BOSQUE TO 550-E/O BOSQUE 1	3/1/15	12/31/17	\$2,783	\$49,500			98.2		1.8															
Recycled	06306	PA51 BENCHMARK-BOSQUE TO 550-E/O BOSQUE 6	3/1/15	12/31/17	\$2,783	\$49,500												99.6						0.4		
Sewer	06331	PA51 GP CULTIVATE (BOSQUE TO 500 E/O BOSQUE	3/1/15	12/31/17	\$6,176	\$220,000												100.0								
Sewer	06400	NEWPORT COAST SLS IMPROVEMENTS	6/1/15	7/31/18	\$1,543,439	\$2,059,200																100.0				
Potable	06401	ZONE 1 RESERVOIR NO. 2	4/1/16	8/31/19	\$2,938,567	\$12,626,300	32.6	3.3	3.0	47.5	11.1	0.4	1.6	0.5												
Sewer	06476	PA51 MARINE WAY. RIDGE VALLEY TO 3000 FT EAS	6/1/15	12/31/17	\$22,163	\$426,800																		100.0		
Sewer	06479	400/450 SPECTRUM CENTER DR 36 SS RELOCATION	6/1/15	7/31/17	\$5,613	\$596,200												33.1	3.4	3.4	48.5		9.7	0.3	1.3	0.3
Potable	06512	PA51 GP-1 ST (MARINE TO GP-2 ST) 12 DW	6/1/15	8/31/17	\$9,697	\$355,300			20.9		79.1															
Sewer	06513	PA51 GP-1 ST (MARINE TO GP-2 ST) 12 SS	6/1/15	8/31/17	\$25,565	\$938,300																		100.0		
Recycled	06514	PA51 GP GP-1 ST (MARINE TO GP-2 ST) 10 RW	6/1/15	12/31/17	\$14,325	\$536,800																		87.4		12.6
Potable	06534	PA51 GP PUSAN (EPISODE TO IRVINE BLVD) 12 DW	6/1/15	12/31/17	\$922	\$44,000			98.2		1.8															
Recycled	06535	PA51 GP PUSAN (EPISODE TO IRVINE BLVD) 12 RW	6/1/15	8/31/17	\$2,398	\$106,700																		99.6		0.4
Potable	06536	PA51 GP-2 ST (BOSQUE TO GP1 ST) 12 DW	6/1/15	8/31/17	\$12,342	\$531,300			20.9		79.1															
Sewer	06537	PA51 GP-2 ST (BOSQUE TO GP1 ST) 12 SS	6/1/15	8/31/17	\$7,493	\$333,300																		100.0		
Recycled	06538	PA51 GP-2 ST (BOSQUE TO GP1 ST) 10 RW	6/1/15	8/31/17	\$30,854	\$1,169,400																		87.4		12.6
Potable	06552	PA51 GP BENCHMARK AND PERSPECTIVE 12 DW Z4	7/1/15	12/31/17	\$3,320	\$147,400			98.2		1.8															
Sewer	06553	PA51 GP BENCHMARK AND PERSPECTIVE 16 SS	7/1/15	8/31/17	\$5,534	\$244,200																		100.0		
Recycled	06554	PA51 GP BENCHMARK AND PERSPECTIVE 6 RW ZC	7/1/15	8/31/17	\$2,951	\$129,800																		99.6		0.4
Recycled	06595	PA51 GP TERRAPIN (TRABUCO TO CADENCE) 6 RW	7/1/15	12/31/17	\$3,333	\$180,400																		87.4		12.6
Potable	06683	PA51 GP BENCHMARK AND MODJESKA (DISTRICT 4	8/1/15	8/31/17	\$4,187	\$150,700			98.2		1.8															
Recycled	06684	PA51 GP BENCHMARK AND MODJESKA (DISTRICT 4	8/1/15	8/31/17	\$26,446	\$971,300																		99.6		0.4
Recycled	06732	PA51 GP MAGNET (FROM RIDGE V. TO BOSQUE) 6	9/1/15	8/31/17	\$3,939	\$206,800																		87.4		12.6
Potable	06765	TUSTIN LEGACY MOFFETT DR (AT PETERS CYN) 12	10/1/15	7/31/18	\$210,205	\$287,000			100.0																	
Recycled	06766	TUSTIN LEGACY MOFFETT DR (AT PETERS CYN) 16 R	10/1/15	7/31/18	\$279,685	\$375,000																		100.0		
Recycled	06823	PA51 GP EPISODE (FROM FRAME TO PUSAN) 16 R	11/1/15	8/31/17	\$10,390	\$323,400																		99.6		0.4
Recycled	06915	PA6 NHB5A 6 AND 8 RECYCLED WATER MAIN ZON	12/1/15	7/31/17	\$4,956	\$402,600																				100.0
Sewer	07009	FPS2 PIPELINE MANIFOLD REPLACEMENT	9/1/16	6/30/18	\$938,436	\$1,144,800																		100.0		
Potable	07012	PA1 NHB3 ORCHARD HILLS 16 DW Z5	2/1/16	10/31/17	\$65,983	\$689,700							100.0													
Recycled	07013	PA1 NHB3 ORCHARD HILLS 6 8 10 12 RW ZC	2/1/16	10/31/17	\$47,098	\$475,200																				100.0
Recycled	07017	PA1 NHB3 ORCHARD HILLS 6 8 RW ZC+	2/1/16	10/31/17	\$24,520	\$250,800																				100.0

System	Project	Project Title	Start	End	FY17-18 Direct	Total Direct	Improvement Districts																																					
							1100	1110	1120	1130	1250	1530	1540	1850	1880	2100	2220	2120	2130	2250	2400	2530	256	2850	2880																			
Recycled	07022	PA51 GP-2 ST (FROM GP-3 TO BOSQUE) 12 RWZC	2/1/16	8/31/17	\$5,111	\$180,400												99.6				0.4																						
Sewer	07070	OCSD SJHPC/GRS	8/1/16	9/30/17	\$0	\$1,000,000													33.1	3.4	3.4	48.5		9.7	0.3	1.3	0.3																	
Sewer	07071	OCSD SOLIDS HANDLING 17/18	8/1/17	4/30/18	\$1,391,000	\$1,391,000													45.5	18.9	1.5	1.5	27.7		4.1	0.1	0.6	0.1																
Potable	07082	POTABLE REUSE ALTERNATIVES ANALYSIS DW	7/1/16	6/30/19	\$83,334	\$250,000		32.6	3.3	3.0	47.5	11.1	0.4	1.6	0.5																													
Sewer	07083	POTABLE REUSE ALTERNATIVES ANALYSIS SS	7/1/16	6/30/19	\$83,334	\$250,000													33.1	3.4	3.4	48.5		9.7	0.3	1.3	0.3																	
Potable	07084	REPLACEMENT PLANNING DW	4/1/18	12/31/19	\$62,954	\$440,000	100.0																																					
Recycled	07085	REPLACEMENT PLANNING RW	4/1/18	12/31/19	\$62,954	\$440,000																						100.0																
Recycled	07086	CALIFORNIA AVE RW PIPELINE-ACADEMY TO THEO	12/1/16	6/30/18	\$689,978	\$732,000																						100.0																
Potable	07087	DRWF WELL 10 REHAB	5/1/17	2/28/18	\$691,667	\$770,000	100.0																																					
Potable	07088	DRWF WELL 11 REHAB	6/1/18	6/30/19	\$37,436	\$770,000	100.0																																					
Potable	07090	DRWF WELL 17 REHAB	7/1/17	11/30/18	\$768,636	\$770,000	100.0																																					
Potable	07091	DRWF WELL 16 REHAB	6/1/18	6/30/19	\$37,436	\$770,000	100.0																																					
Potable	07093	DRWF WELL 7 REHAB	9/1/16	7/31/17	\$20,760	\$770,000	100.0																																					
Potable	07095	MEMBRANE PLANTS NEW ANTISCALANT PILOT TES	7/1/16	12/31/17	\$44,211	\$299,300		32.6	3.3	3.0	47.5	11.1	0.4	1.6	0.5																													
Recycled	07096	METER AND VAULT FOR OSO RESERVOIR	7/1/17	12/31/19	\$46,667	\$375,100																						14.6	10.7	4.1	51.0	7.7	10.4		1.5									
Sewer	07097	MICHELSON SEWER FORCE MAIN RELINING	12/1/16	12/31/18	\$613,803	\$1,367,300																														100.0								
Sewer	07098	REBUILD SMH ON MAIN ST E/O MACARTHUR	1/1/17	12/31/18	\$107,539	\$178,200																														100.0								
Recycled	07099	SEAWATCH RW MAIN REPLACEMENT (S/O PACIFIC	12/1/16	12/31/18	\$507,639	\$720,500																														100.0								
Sewer	07100	SEWER LINE REPAIRS	9/1/16	6/30/18	\$295,296	\$322,000																														100.0								
Recycled	07101	UCI CT RW CONV ACADEMY WAY	7/1/16	1/31/18	\$796,769	\$951,500																														100.0								
Recycled	07102	UCI CT RW CONV CALIFORNIA-UNIV TO ACADEMY	7/1/16	1/31/18	\$278,358	\$346,500																														83.0	17.0							
Recycled	07103	UCI CT RW CONVERSION ONSITE PIPELINES	9/1/16	6/30/18	\$517,631	\$1,050,000																														100.0								
Sewer	07112	VACTOR ACCESS TO SMH ON SO IRVINE INTERCEPT	9/1/16	12/31/18	\$190,846	\$347,600																														100.0								
Potable	07117	OPS CENTER ROOF REPLACEMENT-DW	7/1/16	7/31/17	\$4,403	\$166,000	100.0																																					
Sewer	07118	OPS CENTER ROOF REPLACEMENT-SS	7/1/16	7/31/17	\$4,758	\$166,000																														100.0								
Recycled	07119	OPS CENTER ROOF REPLACEMENT-RW	7/1/16	7/31/17	\$1,119	\$166,000																														100.0								
Potable	07127	RAISE SYSTEM VALVES 17/18 UNDER RA-DW	7/1/17	6/30/18	\$577,500	\$577,500	100.0																																					
Sewer	07129	RAISE MANHOLES TO GRADE 17/18 UNDER RA	7/1/17	6/30/18	\$346,500	\$346,500																															100.0							
Recycled	07131	RAISE SYSTEM VALVES 17/18 UNDER RA-RW	7/1/17	6/30/18	\$138,600	\$138,600																														100.0								
Recycled	07137	OPA ZONE C+ PIPELINES	10/1/14	12/31/18	\$1,174,526	\$1,550,900																														14.6	10.7	4.1	51.0	7.7	10.4		1.5	
Potable	07140	TUSTIN LEGACY RED HILL WELL DRILLING AND EQU	6/1/18	12/31/20	\$36,754	\$4,559,800		32.6	3.3	3.0	47.5	11.1	0.4	1.6	0.5																													
Recycled	07141	WATER RECYCLING TRT PLANT MSTR PLAN UPDATE	4/1/16	1/31/19	\$160,341	\$454,300																															14.6	10.7	4.1	51.0	7.7	10.4		1.5
Potable	07153	WATER AND ENERGY PLANNING STUDIES DW 17/1	7/1/17	6/30/18	\$126,500	\$126,500		32.6	3.3	3.0	47.5	11.1	0.4	1.6	0.5																													
Potable	07156	NTS INSTRUMENTATION	7/1/16	6/30/18	\$45,000	\$330,000		32.6	3.3	3.0	47.5	11.1	0.4	1.6	0.5																													
Recycled	07163	TUSTIN LEGACY BELL AVE (REDHILL TO ARMSTRON	3/1/16	12/31/17	\$4,278	\$162,800																																	100.0					





System	Project	Project Title	Start	End	FY17-18 Direct	Total Direct	Improvement Districts																							
							1100	1110	1120	1130	1250	1530	1540	1850	1880	2100	2220	2120	2130	2250	2400	2530	256	2850	2880					
Sewer	07884	DERIAN SEWER UPSIZING	6/1/18	6/30/19	\$19,154	\$715,000											100.0													
Sewer	07885	SEWER SYSTEM CALCIUM REMOVAL	6/1/18	6/30/19	\$18,954	\$440,000											100.0													
Sewer	07886	SEWER SIPHON REHABILITATION	6/1/18	6/30/19	\$19,877	\$440,000											100.0													
Potable	07887	IRVINE LAKE SERVICE IMPROVEMENT	6/1/18	6/30/19	\$13,323	\$228,800		32.6	3.3	3.0	47.5	11.1	0.4	1.6	0.5															
Potable	07888	TURTLE RIDGE PIPE REHAB-DW	7/1/17	3/31/18	\$309,000	\$309,000	100.0																							
Recycled	07889	TURTLE RIDGE PIPE REHAB-RW	7/1/17	3/31/18	\$309,000	\$309,000											100.0													
Sewer	07890	MWRP HEADWORKS PLATFORMS	7/1/17	12/31/18	\$108,399	\$175,000												33.1	3.4	3.4	48.5		9.7	0.3	1.3	0.3				
Sewer	07891	MWRP HEADWORKS SCREENING AREA DIVERTER C	6/1/18	6/30/19	\$4,192	\$180,500												33.1	3.4	3.4	48.5		9.7	0.3	1.3	0.3				
Sewer	07892	MWRP FILTER VALVES AND GATE REPLACEMENT	6/1/18	6/30/19	\$7,092	\$461,000											100.0													
Potable	07893	DATS AND IDP INSTRUMENTATION MODS-DW	6/1/18	6/30/19	\$5,869	\$112,300		32.6	3.3	3.0	47.5	11.1	0.4	1.6	0.5															
Recycled	07894	DATS AND IDP INSTRUMENTATION MODS-RW	6/1/18	6/30/19	\$5,869	\$112,300												14.6	10.7	4.1	51.0	7.7	10.4		1.5					
Potable	07895	NTS MASTER PLAN UPDATE	1/1/18	6/30/19	\$33,333	\$100,000		32.6	3.3	3.0	47.5	11.1	0.4	1.6	0.5															
Potable	07896	MARSH O&M PLAN UPDATE	1/1/18	6/30/19	\$99,000	\$297,000		32.6	3.3	3.0	47.5	11.1	0.4	1.6	0.5															
Potable	07897	SOUTH SAN DIEGO CREEK RUNOFF DIVERSION STU	1/1/18	6/30/20	\$20,000	\$100,000		32.6	3.3	3.0	47.5	11.1	0.4	1.6	0.5															
Potable	07898	PLC REPLACEMENT-DW	7/1/17	12/31/20	\$106,667	\$440,000	100.0																							
Recycled	07899	PLC REPLACEMENT-RW	7/1/17	12/31/20	\$106,667	\$440,000											100.0													
Sewer	07900	MWRP DUMP STATION IMPROVEMENTS	7/1/17	12/31/18	\$150,000	\$291,500												33.1	3.4	3.4	48.5		9.7	0.3	1.3	0.3				
Potable	10022	PA51 GP NEIGHBORHOODS D5 - CHINON FROM SO	2/1/17	12/31/17	\$84,063	\$163,000			98.2		1.8																			
Sewer	10023	PA51 GP NEIGHBORHOODS D5 CHINON FROM S. C	2/1/17	12/31/17	\$84,063	\$163,000												100.0												
Recycled	10024	PA51 GP NEIGHBORHOODS D5 16 RW, 12 RW and	2/1/17	12/31/17	\$84,063	\$163,000												99.6						0.4						
Potable	10047	OPERATIONS CENTER ASPHALT REPLACEMENT - D	7/1/17	9/30/18	\$160,000	\$200,000	100.0																							
Recycled	10049	OPERATIONS CENTER ASPHALT REPLACEMENT - R	7/1/17	9/30/18	\$160,000	\$200,000											100.0													
Sewer	10051	OPERATIONS CENTER ASPHALT REPLACEMENT - SS	7/1/17	9/30/18	\$80,000	\$100,000											100.0													
Potable	10052	INDUSTRIAL COATINGS REPLACEMENT - DW	7/1/17	9/30/18	\$160,000	\$200,000	100.0																							
Recycled	10053	INDUSTRIAL COATINGS REPLACEMENT - RW	7/1/17	9/30/18	\$160,000	\$200,000											100.0													
Sewer	10054	INDUSTRIAL COATINGS REPLACEMENT - SS	7/1/17	9/30/18	\$80,000	\$100,000											100.0													
Potable	10061	SCE-IRWD WATER-ENERGY PILOT PHASE 2	7/1/17	6/30/19	\$189,750	\$379,500		32.6	3.3	3.0	47.5	11.1	0.4	1.6	0.5															
Recycled	10063	SALT MANAGEMENT MODELING ON RECYCLED WA	7/1/17	6/30/18	\$108,100	\$108,100												14.6	10.7	4.1	51.1	7.7	10.3		1.5					
Potable	10065	RELIABILITY EVALUATION PHASE 2 ANALYSIS	7/1/17	6/30/18	\$66,000	\$66,000		32.6	3.3	3.0	47.5	11.1	0.4	1.6	0.5															
Sewer	10068	PA51 GP REACH A SS PHASE 2	2/1/17	12/31/17	\$389,003	\$652,000												67.0					33.0							
Recycled	10071	SERRANO SUMMIT PHASE 2 RW	4/1/17	12/31/19	\$88,284	\$507,000																						100.0		
Recycled	10093	MWRP RW DISCHARGE TO SAN DIEGO CREEK	7/1/17	12/31/19	\$361,000	\$1,905,000												33.1	3.4	3.4	48.6		9.6	0.3	1.3	0.3				
Potable	10094	PASEO SOMBRA DW UPSIZE AND INTERCONNECTI	6/1/18	12/31/19	\$13,263	\$582,000					100.0																			
Sewer	10095	LAKE FOREST AUTUMNWOOD/ELDERWOOD SEWE	6/1/18	12/31/19	\$13,789	\$712,000					100.0																			
Potable	10096	LAKE FOREST NAKASE DW IMPROVEMENTS	6/1/18	7/31/20	\$5,077	\$437,000					100.0																			

Improvement Districts

System	Project	Project Title	Start	End	FY17-18 Direct	Total Direct	1100	1110	1120	1130	1250	1530	1540	1850	1880	2100	2220	2120	2130	2250	2400	2530	256	2850	2880	
Potable	10097	DRWF WELL 2 REHAB	8/1/17	5/31/18	\$770,000	\$770,000	100.0																			
Potable	10101	SANTIAGO CANYON FLEMING STORAGE	6/1/18	12/31/22	\$87,816	\$11,207,500		100.0																		
Potable	10102	SANTIAGO CANYON POTABLE PIPELINE REPLACEM	6/1/18	12/31/22	\$52,574	\$6,726,000	100.0																			
Potable	10109	GP DEPT 250 FY 17/18	7/1/17	6/30/18	\$624,800	\$624,800	32.9	4.5	0.5	0.4	6.5	1.5	0.1	0.2	0.1	40.8	4.0	0.5	0.4	6.1	0.1	1.2		0.2		
Potable	10110	GP DEPT 500s FY 17/18	7/1/17	6/30/18	\$135,000	\$135,000	32.9	4.5	0.5	0.4	6.5	1.5	0.1	0.2	0.1	40.8	4.0	0.5	0.4	6.1	0.1	1.2		0.2		
Potable	10111	GP DEPT 600 FY 17/18	7/1/17	6/30/18	\$331,000	\$331,000	32.9	4.5	0.5	0.4	6.5	1.5	0.1	0.2	0.1	40.8	4.0	0.5	0.4	6.1	0.1	1.2		0.2		
Potable	10112	GP DEPT 740 FY 17/18	7/1/17	6/30/18	\$44,060	\$44,060	32.9	4.5	0.5	0.4	6.5	1.5	0.1	0.2	0.1	40.8	4.0	0.5	0.4	6.1	0.1	1.2		0.2		
Potable	10113	GP DEPT 800s FY 17/18	7/1/17	6/30/18	\$1,377,100	\$1,377,100	32.9	4.5	0.5	0.4	6.5	1.5	0.1	0.2	0.1	40.8	4.0	0.5	0.4	6.1	0.1	1.2		0.2		
Potable	10115	2ND ST DW PUMP STATION DEMOLITION	8/1/17	12/31/18	\$35,000	\$85,000	100.0																			
Sewer	10117	PA51 GP NEIGHBORHOODS D5 CADENCE S FROM	4/1/17	5/31/20	\$33,690	\$249,000												100.0								
Potable	10119	DW RESERVOIR LADDER FALL PROTECTION	5/1/17	10/31/19	\$49,549	\$100,000	100.0																			
Recycled	10120	RW RESERVOIR LADDER FALL PROTECTION	5/1/17	10/31/19	\$19,410	\$40,000										100.0										
<b>Totals</b>					<b>97,201,005</b>	<b>712,765,510</b>																				

6/6/2017

Irvine Ranch Water District  
Fiscal Year 2017-18 Capital Budget  
Section 2 - Flagged Projects

Project Number	Project Title	Flagged Project	Project Status
01100	LAKE FOREST WELL 1 DRILLING	Yes	Board Approved
01117	LAKE FOREST WELL 1 WELLHEAD	Yes	Board Approved
01402	WELLS 51/52/53 TREATMENT ALTERNATIVES STUDY	Yes	Board Approved
07140	TUSTIN LEGACY RED HILL WELL DRILLING AND EQUIPPING	Yes	Board Approved
03808	SYPHON RESERVOIR EXPANSION	Yes	Active

Irvine Ranch Water District  
Fiscal Year 2017-18 Capital Budget

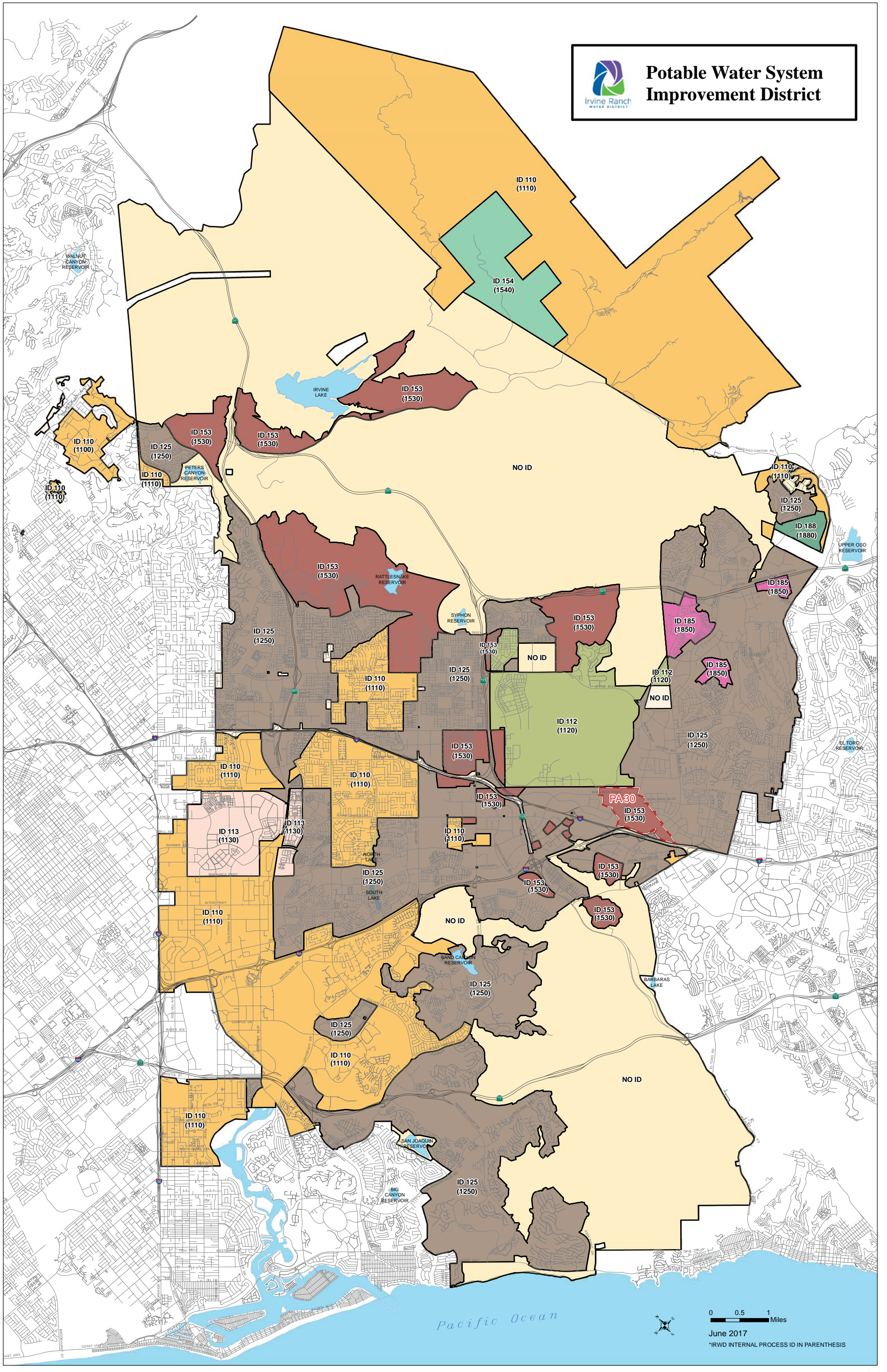
Section 3 - Projected FY 2017-18 Expenditures by Fiscal Year Expenditure Groups

FY Exp Category	Total Direct	FY17-18 Direct	FY Replacement	FY Developed	FY Developing
ILP Conversion Projects	\$25,373,600	\$16,185,669	\$201,026	\$5,393,597	\$10,591,046
Solids Handling	\$216,073,100	\$15,412,800	\$7,012,824	\$7,182,365	\$1,217,611
OCSD - CORF - Solids Lease	\$63,909,000	\$9,779,971	\$4,869,078	\$4,040,535	\$870,358
Replacement - Facilities	\$44,282,100	\$9,777,229	\$8,805,797	\$805,335	\$166,097
Operational	\$41,406,600	\$9,646,161	\$782,642	\$7,332,723	\$1,530,796
Replacement - FY System	\$7,572,350	\$7,572,350	\$7,572,350	\$0	\$0
Property Management	\$24,969,300	\$4,336,924	\$4,336,924	\$0	\$0
Development - Sub Regional	\$15,339,800	\$4,243,187	\$224,661	\$126,453	\$3,892,072
Water Resources	\$12,194,600	\$3,203,717	\$3,010,915	\$163,851	\$28,951
Well Rehabilitation	\$5,840,000	\$2,786,384	\$2,786,384	\$0	\$0
Water Banking	\$24,381,400	\$2,736,998	\$0	\$2,192,335	\$544,663
General Plant	\$2,511,960	\$2,511,960	\$1,851,315	\$532,536	\$128,110
Development - PA51	\$34,803,400	\$2,503,158	\$0	\$0	\$2,503,158
Planning	\$3,825,500	\$2,113,486	\$125,908	\$1,499,348	\$488,231
Development - PA1	\$2,415,600	\$779,963	\$0	\$0	\$779,963
Development - Tustin Legacy	\$3,951,800	\$651,113	\$0	\$0	\$651,113
OCWD Annexation	\$589,300	\$589,300	\$0	\$472,029	\$117,271
Replacement-Business Software	\$5,364,200	\$555,563	\$0	\$449,172	\$106,390
Sewage Treatment	\$1,375,600	\$485,506	\$0	\$382,865	\$102,641
Nonpotable Storage	\$60,169,200	\$417,364	\$0	\$305,928	\$111,436
Baker WTP	\$100,852,000	\$224,186	\$0	\$179,573	\$44,613
Development - PA39	\$226,600	\$174,315	\$0	\$0	\$174,315
Development - Lake Forest	\$2,905,900	\$128,976	\$0	\$32,130	\$96,846
Development - PA9B	\$506,100	\$104,752	\$0	\$0	\$104,752
Development - SHII	\$4,754,400	\$104,206	\$0	\$0	\$104,206
Development - PA40	\$447,700	\$69,396	\$0	\$0	\$69,396
Development - PA6	\$1,628,000	\$50,743	\$0	\$0	\$50,743
Development - PA18	\$2,839,600	\$31,093	\$0	\$14,043	\$17,049
Development - PA5B	\$2,256,800	\$24,536	\$0	\$11,734	\$12,802

\$97,201,005



# Potable Water System Improvement District



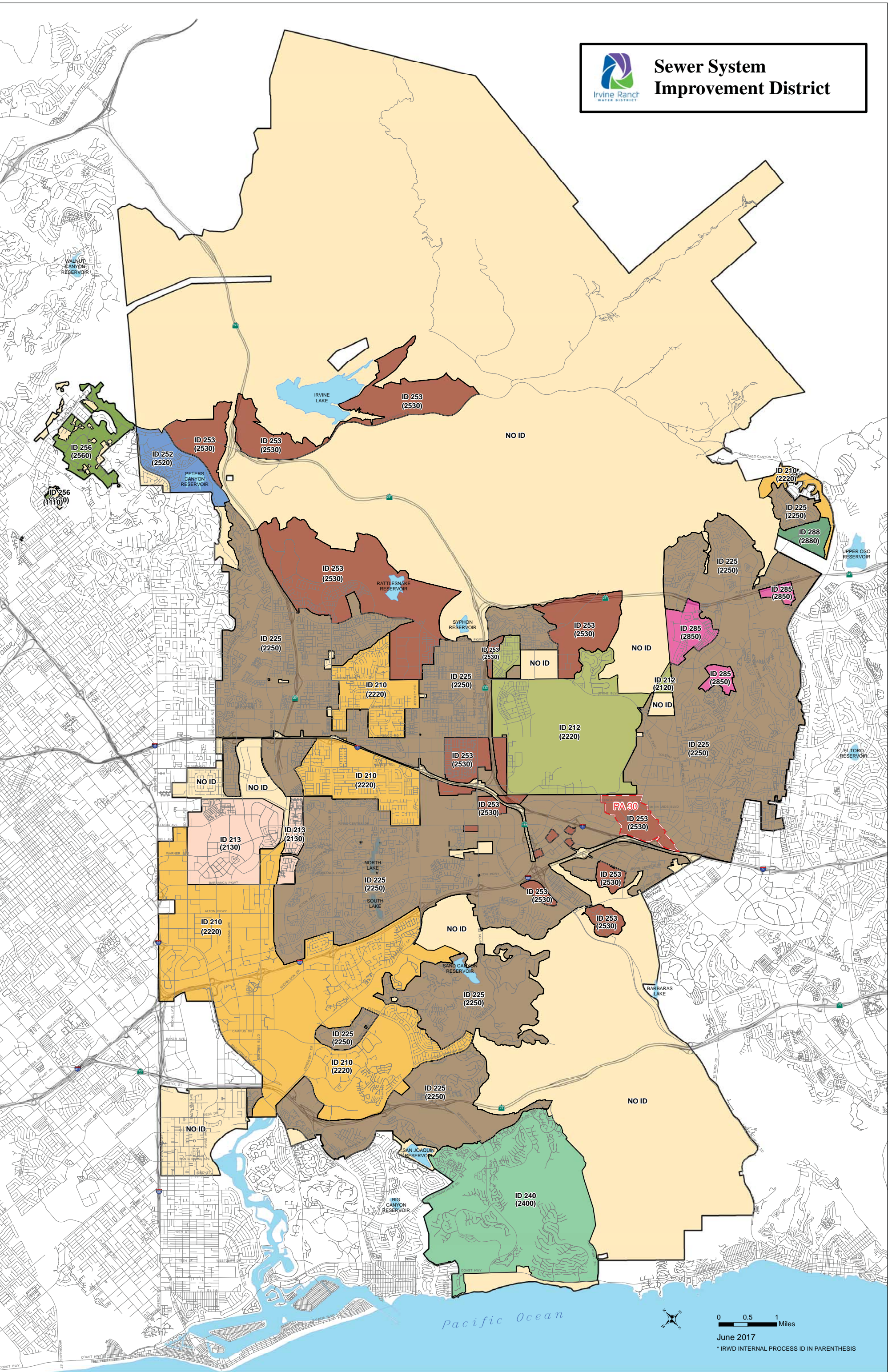
0 0.5 1 Miles

June 2017

\*IRWD INTERNAL PROCESS ID IN PARENTHESIS



# Sewer System Improvement District



0 0.5 1 Miles

June 2017

\* IRWD INTERNAL PROCESS ID IN PARENTHESIS